



# Photogrammetry



## What is Photogrammetry?

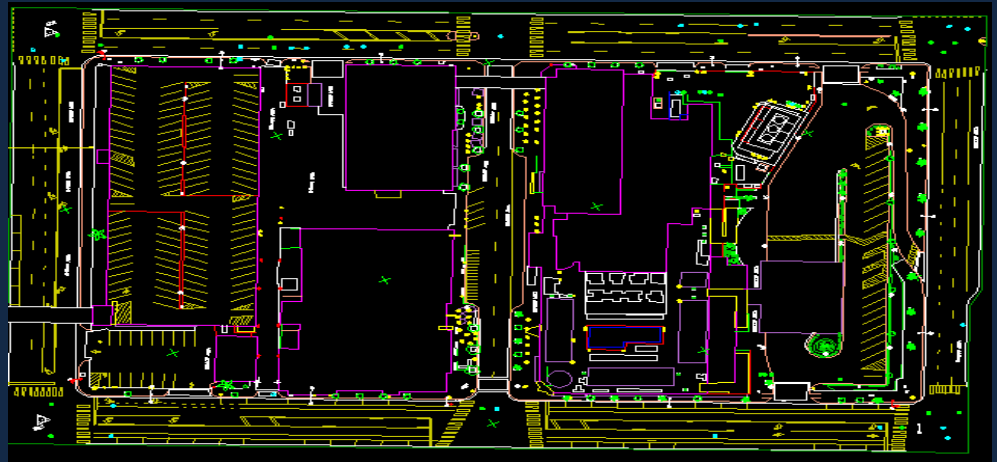
Photogrammetry is the science of making measurements from photographs, especially for recovering the exact positions of surface points. Moreover, it may be used to recover the motion pathways of designated reference points located on any moving object, on its components and in the immediately adjacent environment. Photogrammetry may employ high-speed imaging and remote sensing in order to detect, measure and record complex 2-D and 3-D motion fields (see also sonar, radar, lidar etc.). Photogrammetry feeds the measurements from remote sensing and the results of imagery analysis into computational models in an attempt to successively estimate, with increasing accuracy, the actual, 3-D relative motions within the researched field.

**M2 Geomatics** is bringing photogrammetry to new heights by combining traditional photogrammetry, aerial and terrestrial LiDAR with bathymetric surveying all under one roof. We can deliver one seamless product for your project out of one shop. We can also provide ground control targets and horizontal and vertical control in house if you do not have the means to do so.

**M2 Geomatics** is able to provide your firm numerous different types of photogrammetric services, including, but not limited to:

### Aerial Photography

- Vertical/Spot Shot
- Low & High Level Oblique's
  - Construction Progress
  - Real Estate
- Low Altitude, Forensic
- Topographic Mapping
- Small Scale
- Large Scale

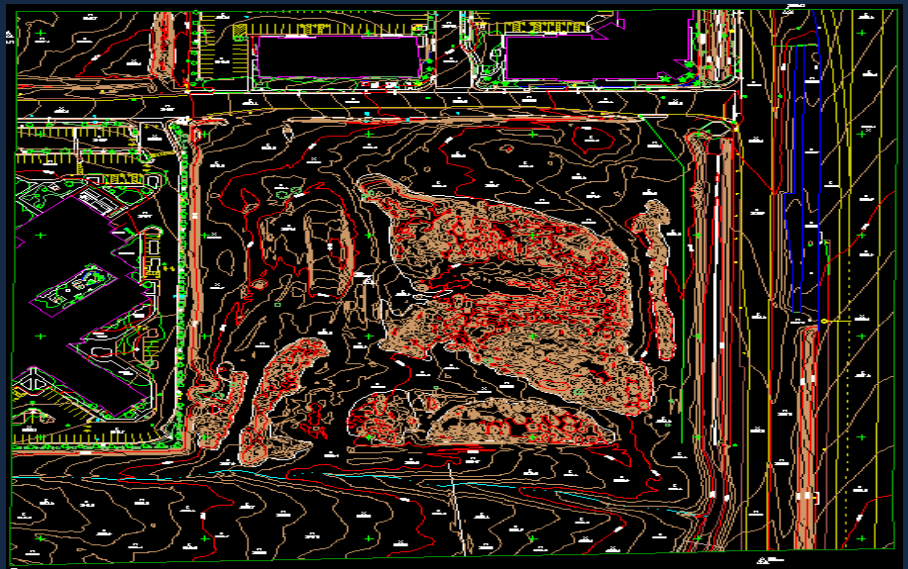


### Planimetric Mapping

- ALTA Surveys
  - Apartments/Condominiums
  - Commercial Properties
  - Golf Courses

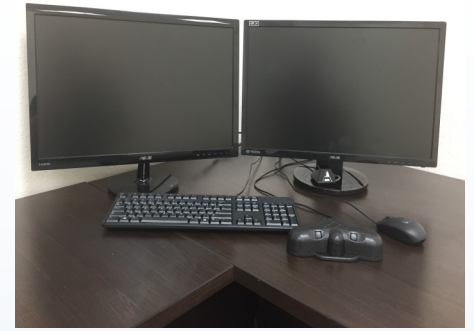
### Volume Calculations/Comparisons & Analysis

- Landfills
- Mining
- LiDAR Data Acquisition
- Digital Terrain Models (DTMs)
- Digital Orthophotography



## Our Methods

**M2 Geomatics** uses the latest DAT/EM Summit Evolution Softcopy software on extremely robust computers that can handle very large aerial photographs and point clouds. This allows for the in house handling of a wide range of data acquisition types specific to your project. Every project is overseen by a licensed Land Surveyor to ensure the desired level accuracy is achieved. We also use high quality film, digital and LiDAR sensors and can provide airborne GPS if needed. You will always find our team pleasant, efficient and eager to assist you.



### **M2 Geomatics promises the following on every project:**

- **Communication:** Our team believes communication is extremely vital to achieve a successful project. From the initial project quote, all the way to the delivery of the project & any support or assistance required afterwards.
- **Quality Final Deliverables:** Our team is dedicated to achieving high quality & accuracy on all projects regardless of size; from small to large projects.
- **Scheduling:** Our team recognizes each individual project comes with its own specific time frame. We will utilize all available options to meet, or beat, your desired schedule.
- **Experience:** Our is experienced in many different types of projects, from standard topographic / planimetric mapping to orthophoto mosaics to volumetric calculations & analysis.
- **Equipment:** The M2 Geomatics team will utilize the highest quality & latest modules of hardware & software in the photogrammetric industry including; film, digital or lidar sensors, DAT/EM Summit Evolution and other DAT/EM components, along with the latest in CAD software.

### **M2 Geomatics pledges to provide the following:**

- **Quality Final Products:** Our team is committed to personal service. We want to extend our team effort to provide high caliber quality work that the client deserves.
- **Punctuality:** Our team understands that tight time frames are sometimes necessary and unavoidable. We will not compromise your project work schedule.
- **Experience:** We have broad survey experience on many large and complex projects throughout the western United States.
- **Equipment:** Our team will utilize the highest quality and latest models of survey equipment including total stations, Trimble GPS receivers and the Ocean science Z-Boat.
- **Communication:** Our team believes that communication throughout the life of a project is the key to its success. You, the client, will have direct contact with the key individuals involved in the operation at all times.
- **M2 Geomatics prides ourselves on keeping all of our work in the United States of America.**



# GEOMATICS

3141 WEST POST RD • LAS VEGAS NV 89118 • 702-912-4317

[www.m2geomatics.com](http://www.m2geomatics.com)